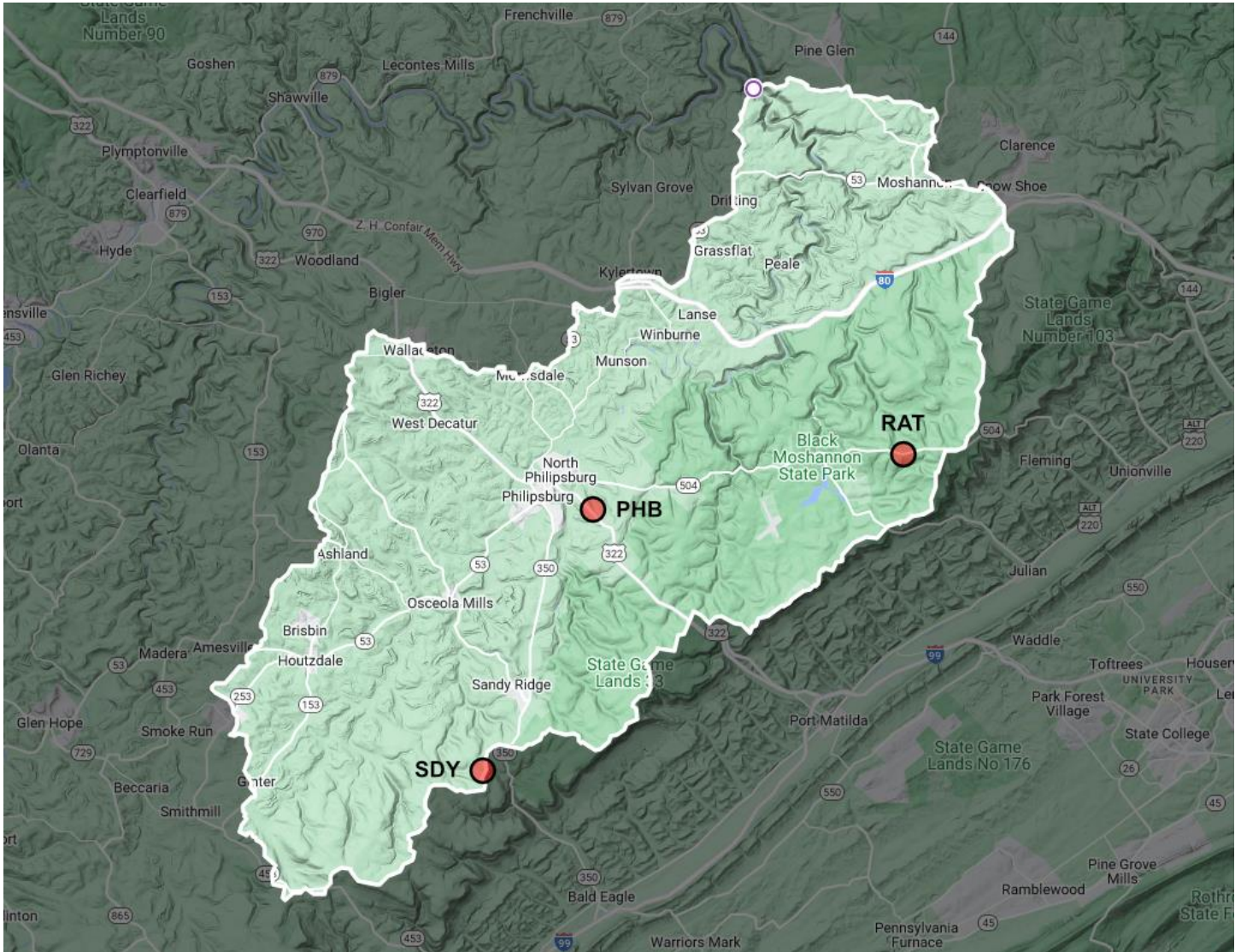


# Plans for the Oct 7, 2023 Simulated Emergency Test (SET)

FINAL - Prepared by Bob Snyder KC3KVS, PARA EmComm Coordinator  
Wednesday, Oct 6, 2023

## 1. Map of Moshannon Valley Watershed and PARA Repeater Sites



# 1. Test Parameters

Topic	Instructions
Nature of Incident	<p>It has been raining steadily for several days, saturating the soil and swelling streams. A hurricane, similar to Hurricane Agnes of 1972, has been making its way up the East Coast. Harrisburg is experiencing severe flooding and the storm is now approaching Centre County. It is expected to drop a significant quantity of additional rain. High winds are expected to cause local and possibly regional power, cell phone, and internet outages.</p> <p>The Moshannon Creek is rising. Bridges near Casanova, Troy, the Harbor Inn, and Chester Hill serve to connect Centre and Clearfield counties. If the bridges become impassable, residents of each county may be stranded in the opposite county.</p>
Response	<p>Members of the PARA EmComm Team are asked to report to the PARA EmComm Center at 315 E. Presquisle St. in Philipsburg PA to provide emergency communications for county and municipal emergency management and response agencies in situations where they are unable to communicate using conventional means.</p>
No Cell Phones (voice or text) No Landline Phones No Internet No Electrical Power	<p>In order to make the simulation as realistic as possible, we are asking every team member to work without the benefit of cell phones, landline phones, internet access, and (where possible) utility power. We will be flipping the circuit breaker and running the PARA EmComm Center entirely on generator power. We will also be disconnecting the center's phones and computers from the internet and from cellular communications.</p> <p>If you run into a problem and you are unable to contact the EmComm Center by any other means, you can call or text Bob Snyder at 814-553-1318. Please use this only as a last resort.</p>
"THIS IS A DRILL"	<p>At the beginning and end of every transmission describing a fictional event or an imaginary circumstance, please remember to say "THIS IS A DRILL".</p>
Tactical Call Signs	<p>Messages can be handled by anyone working at a station, and individual operators may take breaks and be relieved by others. For this reason, we will use tactical call signs that refer to <i>stations</i> rather than to individual <i>people</i>.</p> <p>Example: "This is MOBILE 1 calling PARA BASE."</p> <p>FCC rules require that we also mention our call signs once every ten minutes. To meet this requirement, just tack your call sign onto the end of a transmission every so often.</p> <p>Example: "MOBILE 1 to PARA BASE. Be advised that the Troy bridge is now underwater. KC3XYZ"</p>
Brief, concise messages	<p>Keep all of your transmissions as brief as possible. For example, instead of saying,</p> <p>"This is MOBILE 1. I just got into my car and I am driving toward Kylertown. I expect to be there by 10:15 am."</p> <p>You could just say,</p> <p>"MOBILE 1 enroute to Kylertown. ETA 10:15."</p>
Speak slowly, break frequently	<p>The person receiving your transmission may have trouble hearing you, or they may have trouble keeping up with you if they are writing down your words. Please remember to speak slowly and break often. That will allow the other person a chance to reply and say, "Please repeat" or "Please stand by" as they deal with something else that requires their attention.</p>
Navigate like it's 1985!	<p>Since you will have no cell phone service, you cannot use Google Maps to navigate. If you are a field observer, you will need to pretend we are in the year 1985 when people relied upon maps, landmarks, road signs, street signs, directions, and their own local knowledge. Exception: If you have a GPS navigator that uses only GPS satellites and does not rely on cellular communications, feel</p>

	<p>free to use it. If you need assistance in finding a specific address, please contact the PARA EmComm Center by radio.</p>
Preparation	<p>Please be sure to charge up your radios and TEST all of the equipment you are planning to use during the SET.          Be certain that you have programmed all of the required channels into your radios and be sure to TEST them through the repeaters.          Field observers: Gas up your vehicles. Make sure you are prepared for rain.</p>
Channel Names	<p>To avoid confusion, we will use the Channel Names and Channel Descriptions listed in Section 3. When programming your radios, it is suggested to use the 6-character Channel Names. (e.g. RAT430)          When referring to a channel in conversation, it is suggested to use the Channel Descriptions. (e.g. Rattlesnake 43)</p>
Repeater Limitations	<p>Be aware of the limitations of our repeaters.          The Rattlesnake 43 repeater has poor coverage in Philipsburg Borough, but the Philipsburg 575 GMRS repeater has good coverage there.          The Philipsburg 575 and Rattlesnake 550 GMRS repeaters are linked. Please pause for at least one second before transmitting a reply so the linking station has time to switch.</p>
Use of ICS Forms	<p>All PARA EmComm team members have taken at least one of the online ICS courses that prepare us to more effectively serve emergency management and emergency response agencies (“served agencies”).</p> <p>As communicators, we are expected to use the standard forms that are designed for specific purposes such as ICS213 (General Message) and ICS213RR (Resource Request). This is primarily a concern for the EmComm Center and any team members who might be embedded within a served agency such as the American Legion Shelter facility.</p> <p>All voice messages received from a served agency should be recorded on the appropriate ICS form.</p> <p>When receiving a voice message from an agency, ask whether they will be sending a General Message, a Requisition Request, or some other type of message. Be sure to select the appropriate ICS form before you start writing.</p> <p>ICS-213 – General Message          ICS-213RR – Resource Request</p> <p>When sending a voice message to a served agency, remember to inform their radio operator which type of ICS form you will be sending in order to make their job easier.</p> <p>Field observers and remote station operators who are not communicating with served agencies do not need to be concerned about ICS forms. As a rule of thumb, ICS forms are primarily intended to provide a record of communication BETWEEN facilities or teams and not WITHIN facilities or teams.</p>
Professionalism	<p>A key purpose of the SET is to demonstrate our capabilities to local officials and served agencies. We want to earn their respect by fulfilling requests promptly and competently. A poor showing might undermine their confidence in our abilities. So please make sure you are well prepared for the SET so we don’t waste time dealing with radio programming issues, dead batteries, or other preventable issues.</p>

## 2. Test Schedule

Time	Activity	Notes
0830	Meet at the American Legion to review our plans.	Coffee & donuts provided
0900	Start receiving requests from agencies.	We will respond to these as they arrive throughout the SET.
0900	Assign task to Chris Deck.	He has other commitments at 1000.
0915	Shut off AC power. Start generator.	
0930	ARRL will announce a major incident on the Western PA HF net.	We will inject this into our plans.
0945	HF communications on the Western PA HF frequency (3.983 MHz) will go silent.	
1100	HF communications on the Western PA HF frequency (3.983 MHz) will resume.	
1115	Stop accepting requests for field observations.	
1130	Expect to receive Winlink email from Scott Rummings just before noon.	His availability is very limited because he is teaching a SCUBA class.
1145	Test completed. Shut down the EmComm Center and generator.	
1200	Gather at the American Legion for after-action review.	Hoagies? To be determined.
1230	After-action review completed.	

### 3. Communication Channels

Type	Name	Description	Parameters	Primary Use
VHF	RAT430	Rattlesnake 43 Repeater	146.430 MHz, +1.000 Offset 173.8 Hz	Centre County EOC
	RAT760	Rattlesnake 76 Repeater	146.760 MHz, -0.600 Offset 146.2 Hz	Use as a backup only if RAT430 is not working
	ROC255	Rockton 255 Repeater	147.255 MHz, +0.600 Offset 173.8 Hz	Clearfield County EOC
UHF	RAT425	Rattlesnake UHF Repeater	443.425 MHz, +5.000 Offset 107.2 Hz (in only)	NWS State College PEMA Harrisburg
GMRS	RAT550	Rattlesnake 550 Repeater	462.550 MHz, +5.000 Offset 218.1 Hz	Local communications within the Moshannon Valley (linked repeaters)
	PHB575	Philipsburg 575 Repeater	462.575 MHz, +5.000 Offset 192.8 Hz	
Packet	W3PHB-3	Rattlesnake Packet BBS	145.030 MHz	Digital communications within the central PA region
	W3PHB-7	Rattlesnake Packet Node		
Email	w3phb@winlink.org para-ecc@winlink.org	PARA Winlink		All email to and from the PARA EmComm Center
	arc-stcollege@winlink.org	Red Cross Winlink	Only one "L" – not a typo	All email to and from the Red Cross in State College.
	kb3nia@winlink.org	PEMA Winlink		All email to and from the PEMA station in Harrisburg

## 4. Communication Endpoints

Tactical Call Sign	Location	Operators	Communication Channels
PARA BASE	PARA EmComm Center Philipsburg	John Horgas Chad McKissick Bob Snyder	RAT430 RAT425 PHB575 ROC255 w3phb@winlink.org
REMOTE 1	Williamsburg	Joe Petrulionis	RAT430 w3phb@winlink.org
REMOTE 2	South Philipsburg	Dave Crain	PHB575
REMOTE 3	North Philipsburg	Darren Dixon	PHB575
MOBILE 1	Bellefonte	Chris Deck	RAT430
MOBILE 2	Altoona	Scott Rummings	w3phb@winlink.org
MOBILE 3	Philipsburg	Ryan Williams	PHB575
MOBILE 4	Philipsburg	Regina Monaco	PHB575
SHELTER 1	American Legin Post #437 Shelter Philipsburg	Johna McCormick Susan Sidorick Mariah	PHB575
STATE COLLEGE RED CROSS	American Red Cross State College	Brett Saylor	arc-stcollege@winlink.org
STATE COLLEGE WEATHER	National Weather Service State College	Greg Guise	RAT425
CENTRE COUNTY EOC	Centre County EOC Bellefonte (simulated)	Carmine Prestia	RAT430
CLEARFIELD COUNTY EOC	Clearfield County EOC Clearfield	Scott Mignot (agency staff) Unknown CCARC Member Tim Leet	ROC255
PEMA HEADQUARTERS	PEMA Headquarters Harrisburg	Unknown	PHB425

## 5. Roles of PARA EmComm Team Members

Team Member(s)	Hours Available	Tasks and Notes
Bob Snyder	0830-1230	<ul style="list-style-type: none"> <li>• Monitor and coordinate all SET activities.</li> <li>• Operate the emergency generator.</li> <li>• Assist with ICS forms and documentation.</li> <li>• Monitor text messages sent to 814-553-1318. (use this only if all else fails)</li> </ul>
John Horgas PHB575/RAT430/RAT425 PARA BASE	0830-1230	<ul style="list-style-type: none"> <li>• Monitor the RAT430, RAT425, and PHB575 repeaters.</li> <li>• Document all external communications using appropriate ICS forms.</li> <li>• Other duties as requested.</li> </ul>
Chad McKissick PHB575/ROC255/Winlink PARA BASE	0830-1230	<ul style="list-style-type: none"> <li>• Monitor the ROC255 repeater, w3phb@winlink.org, and W3PHB packet node.</li> <li>• Document all external communications using appropriate ICS forms.</li> <li>• Work with Legion Shelter staff to submit an ARC Disaster Requisition and an ARC Daily Shelter Report to the State College Red Cross using Winlink.</li> <li>• Other duties as requested.</li> </ul>
Joe Petrulionis RAT430/Winlink REMOTE 1	0900-1200	<ul style="list-style-type: none"> <li>• Monitor the Western PA phone net on 3.983 MHz from 0900 to 1000. Expect an incident announcement around 0930.</li> <li>• Expect radio silence between 1000 and 1100. Optionally continue monitoring.</li> <li>• Resume monitoring from 1100 to 1200.</li> <li>• Report to the PARA EmComm Center any information gleaned from the HF net that may be relevant to Clearfield and Centre counties.</li> <li>• Other duties as requested.</li> </ul>
Dave Crain PHB575 REMOTE 2	0900-1200	<ul style="list-style-type: none"> <li>• Observe and report flooding conditions in South Philipsburg.</li> <li>• Monitor Fire radio channels and notify the PARA EmComm Center if any major incidents occur anywhere in the Moshannon Valley.</li> <li>• Other duties as requested.</li> </ul>
Darren Dixon PHB575 REMOTE 3	0900-1200	<ul style="list-style-type: none"> <li>• Self-assigned duties in real time.</li> </ul>
Chris Deck RAT430 MOBILE 1	0900 - 1000	<ul style="list-style-type: none"> <li>• Some key EOC staff members who live west of Milesburg are not showing up at the Willowbank Building. Cell phones are not working, so they cannot be reached.</li> <li>• Centre County EOC would like to know whether traffic flow is impeded for staff coming from the west. <ul style="list-style-type: none"> <li>○ Is traffic backed up on Route 80 near the Milesburg exit?</li> <li>○ Is Water Street flooded anywhere between Milesburg and the Willowbank Building?</li> <li>○ Are any people sitting in or near cars that are flooded out? If so, can you determine whether they are EOC staff?</li> </ul> </li> </ul>
Scott Rummings Winlink MOBILE 2	1130 - 1200	<ul style="list-style-type: none"> <li>• Using Winlink, report to the PARA EmComm Center any significant conditions observed in the Altoona area that might affect Clearfield or Centre Counties.</li> </ul>
Ryan Williams PHB575 MOBILE 3	0830-1230	<ul style="list-style-type: none"> <li>• Be prepared to handle requests received from the Clearfield and Centre county Emergency Operations Centers (EOCs) or the National Weather Service. This may include requests for field observations or requests to deliver messages to EOC staff who live in the Moshannon Valley but cannot be reached by conventional means.</li> <li>• When not responding to requests from agencies, observe Darren and Chad</li> </ul>



		<p>as they handle radio communications in the EmComm Center. Assist with filling out ICS forms if they get swamped. Offer to cover for one of them when they need a break.</p> <ul style="list-style-type: none"> <li>• Monitor Public Safety (Fire, EMS) channels using a police scanner (provided by Bob) for greater situational awareness.</li> </ul>
<p>Regina Monaco PHB575 MOBILE 4</p>	<p>0900 - 1200</p>	<ul style="list-style-type: none"> <li>• Be prepared to handle requests received from the Clearfield and Centre county Emergency Operations Centers (EOCs) or the National Weather Service. This may include requests for field observations of environmental radiation levels.</li> <li>• Assume that there has been some type of nuclear incident. Under the direction of shelter management, perform a radiological scan of each person entering the shelter to ensure that contaminated persons can be identified, isolated, and decontaminated. Keep a log of your measurements.</li> <li>• Equipment Used: <ul style="list-style-type: none"> <li>○ GQ GMC500+ Geiger Counter &amp; Dosimeter</li> <li>○ Radiacode Model 102 Radiation Detector &amp; Dosimeter</li> </ul> </li> </ul>
<p>Tim Leet</p>	<p>0900 - 1200</p>	<ul style="list-style-type: none"> <li>• Monitor Rockton VHF and GMRS repeaters. Monitor 146.52 simplex.</li> <li>• Fulfill requests directed your way by Scott Mignot at the Clearfield EOC.</li> </ul>
<p>Johna McCormick PHB575 SHELTER 1</p>	<p>0830-1230</p>	<ul style="list-style-type: none"> <li>• Night shift workers returning from State College to Osceola Mills and Houtzdale are unable to cross the Moshannon Creek due to flooding. They are stuck in Philipsburg and need a place to keep warm and get some sleep. Some of them are soaking wet because they had to abandon their cars and walk to the shelter.</li> <li>• Summon shelter staff to the American Legion and open up the shelter.</li> <li>• Put up a sign or use the yellow lighted sign to inform motorists and pedestrians that the shelter is open. (make believe)</li> <li>• Assume that there has been some type of nuclear incident. With the help of Regina Monaco, ensure that all guests arriving at the shelter are screened for radiological contamination. Ensure that contaminated individuals are isolated and decontaminated.</li> <li>• Be prepared to handle questions or requests from the Philipsburg EMC (Tim Ryder), the Centre County EOC, or the State College Red Cross office.</li> <li>• Monitor Public Safety (Fire, EMS) channels using a police scanner (provided by Bob) for greater situational awareness.</li> <li>• With the help of Chad McKissick, fill out and submit the following forms to the American Red Cross office in State College via Winlink email: <ul style="list-style-type: none"> <li>○ Form 6409 – ARC Disaster Requisition</li> <li>○ Daily Shelter Report</li> </ul> </li> </ul>



## Services Offered by the PARA EmComm Team

Capability	Description	Examples
Field Observations	We can serve as the eyes and ears of the emergency management team assembled at your facility, providing them real-time observations of local conditions for greater situational awareness.	Weather conditions Stream levels Extent of flooding Dam seepage Road and traffic conditions Ionizing radiation levels (several team members have meters)
Personal Message Delivery	We can visit the homes or workplaces of key persons who cannot be reached by text, phone, or email to convey messages and, in many cases, provide a direct radio link.	John Franek – County Administrator Scott Mignot – EMA Director Dane Danko – Municipal EMC Ryan Ling – DCNR Susan Sidorick – American Legion Shelter - Philipsburg
Channel Monitoring	We can monitor important communication channels and report to you any significant news or announcements heard on the channels.	PA ACS Western Area Net - 3.9935/7.2505 MHz Western PA ARES Voice Net - 3.983 MHz Rockton GMRS Repeater - 462.675 MHz Rattlesnake GMRS Repeater – 462.550 MHz
Public Announcements	We can transmit public announcements on GMRS repeaters which can be heard by citizens monitoring the channels using FRS radios, GMRS radios, or police scanners.	Shelters are open at the following locations... Bottled water is available at the following locations... Potassium Iodide tablets are available at the following locations...

## 6. Examples of Possible Requests to the PARA EmComm Center

Agency	Request
Centre County EOC	Is Water Street open to vehicular traffic between the Willowbank Building in Bellefonte and Route 220 at Milesburg?
	Centre County EMA is unable to reach John Franek. Go to his house and inform him that his presence is requested at the Centre County EOC.
	Centre County EMA is unable to reach the American Legion shelter director. Go to their house and request that they open up the shelter.
Clearfield County EOC	What is the overall state of flooding in Chester Hill? Is Route 53 open to vehicular traffic between Philipsburg and the Hometown Market in Chester Hill?
	Clearfield County EOC is unable to reach Scott Mignot, Dane Danko, or Ryan Ling. Go to their house and inform them that their presence is requested at the Clearfield County EOC.
	Clearfield County EOC is unable to reach the Gethsemane Church shelter director. Go to their house and request that they open up the shelter.
State College NWS Office	Requests for weather observations, soil moisture levels, stream water levels, extent of flooding.
Harrisburg PEMA HQ	Announcements by PEMA of state and regional conditions.